

A-GET-UP, STEP-UP, RISE-UP!

STUDIO 1BHK

RESIDENTIAL APARTMENTS

On Main 160ft. Road, **Mahindra DTA,**
Paldi Parsa, Jaipur

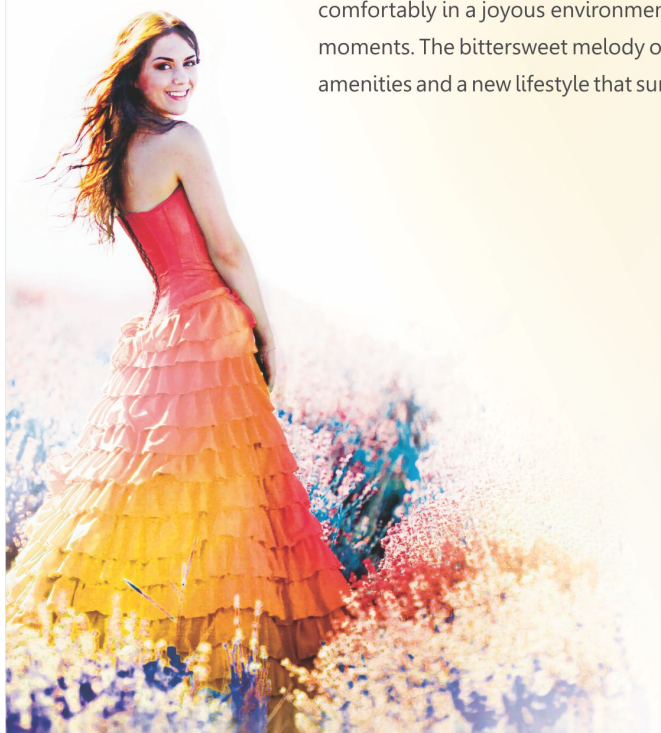


An
address
truly worthy
of you.



Premier Arise, Plot No. 634, Block-E, On Main 160 ft. Road, Mahindra DTA, Paldi Parsa, Jaipur (Raj.)

Home is where love resides, memories are created, friends are always welcome and family is forever. Nestled comfortably in a joyous environment, the way of life at **Premier Arise** hums in unison with the rhythm of captivating moments. The bittersweet melody of the city's bustle fades away as Premier Arise opens its gates to a world of modern amenities and a new lifestyle that surpasses the ordinary. It is here that your favourite memories will be created.

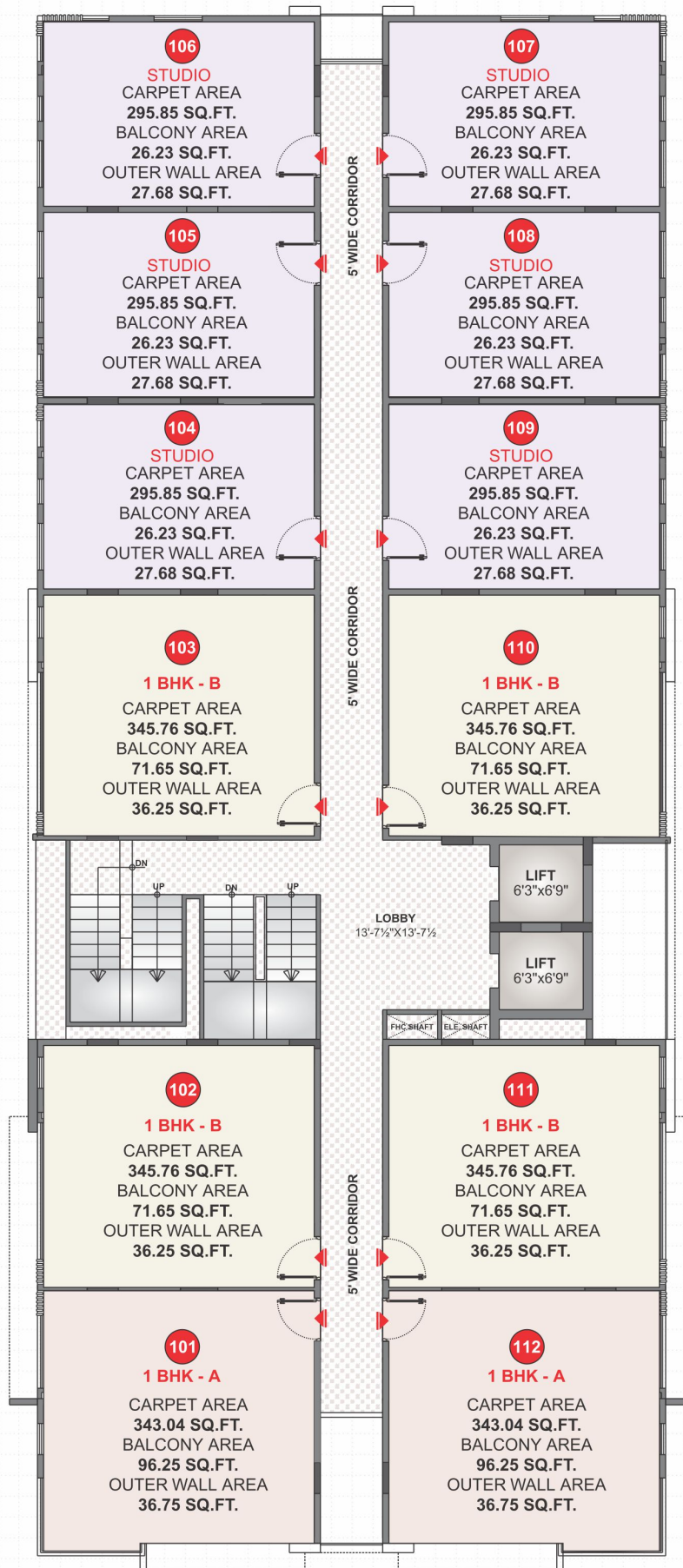


10
STOREY
RESIDENTIAL

108
Studio Apartments
1 BHK Apartments

Top-of-the-line Assortments

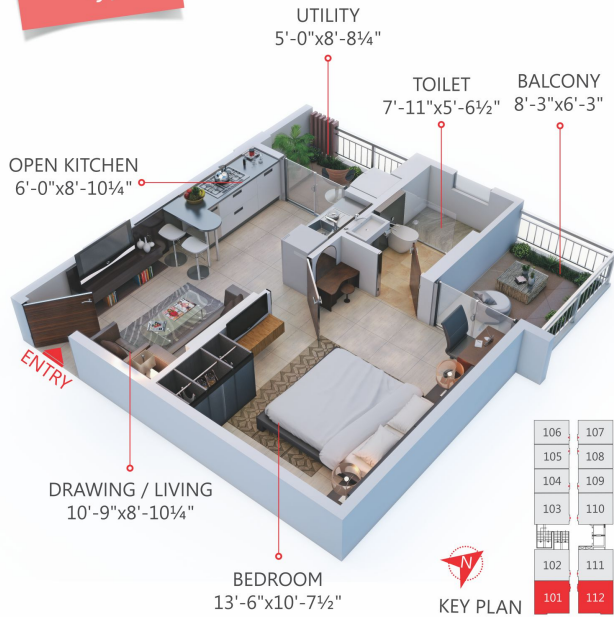
- Parking at Two Basements and Stilt Floor as per layout.
- 2 nos. 8 passengers elevators.
- 100% Power Back-up in common areas.
- Three tier security system through Security Guards, CC TV Cameras & Intercom.
- 1KVA Power Back-up in internal Flat.
- Well-designed Lobby and Reception Area as per layout.
- Wi-Fi Zone



TYPICAL FLOOR

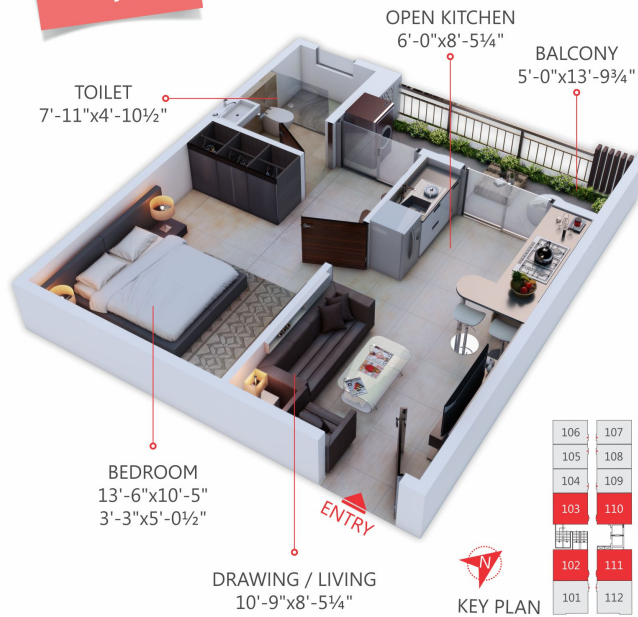
floor plan 1bhk type a

1 BHK TYPE-A | CARPET AREA = 343.04 SQ.FT.
BALCONY AREA = 96.25 SQ.FT.
OUTER WALL AREA = 36.75 SQ.FT.



floor plan 1bhk type b

1 BHK TYPE-B | CARPET AREA = 345.76 SQ.FT.
BALCONY AREA = 71.65 SQ.FT.
OUTER WALL AREA = 36.25 SQ.FT.



floor plan studio

STUDIO TYPE-A | CARPET AREA = 295.85 SQ.FT.
BALCONY AREA = 26.23 SQ.FT.
OUTER WALL AREA = 27.68 SQ.FT.



finer details

DOORS & WINDOWS

- UPVC / Anodized Aluminum Windows
- Main Doors : Laminate Finish
- Internal Doors : 30mm Thick Laminate Finish Flush Doors

KITCHEN

- High Quality Vitrified Tiles with Granite Counter Top
- SS Sink
- Provision for Reverse Osmosis (R.O.)
- Semi Modular Kitchen as per Layout
- Provision for Chimney

FLOORING

- Vitrified Tiles / Laminate Flooring for Bedrooms
- Balcony : Anti-skid / Rustic Finish Tiles

TOILETS

- Cera / Jaquar or Equivalent Sanitary Ware
- Jaquar or Equivalent C.P.Fittings
- Premium Quality Tiles for Floor & Walls

BUILDING & SERVICES

- Earthquake Resistant R.C.C. framed Structure
- 100% Power Backup for Common Areas
- Provision for DTH
- Rain Water Harvesting System
- CCTV Coverage for Common Areas
- Group EPABX
- Intercom at Guard Hut

MISCELLANEOUS

- Well Designed Entrance Lobby
- Acrylic Emulsion Paint
- Piping For Split AC

TOWARDS GREEN

- Use of Engineered Blocks
- Use of High Quality RMC for Structure



STILT FLOOR



why mahindra sez holds huge prominence in Jaipur?

location with a global standpoint.

- Built near NH-8 (Jaipur–Ajmer Highway).
 - Closer to Bagru & Chitroli Industrial Areas.
 - Close to Top Schools & Universities like-Jayshree Periwal International School, St. Xaviers School, DPS, JK Lakshmiapat & Manipal Universities.
 - Close proximity from Proposed Outer Ring Road & Delhi- Mumbai Industrial Corridor.
 - Project situated at 160ft wide Main Road.
 - JDA Approved Plot & Building Plans, NOC from Airport Authority and Fire Department Obtained.
- A large population already working there for MNC & Corporates.
 - IT setups like Infosys Technologies, Deutsche Bank, Genpact, Metlife, & Nagarro Software etc.
 - Dedicated zones for IT / ITes, Engineering and Related Industries, Handicrafts, Apparel, Gems and Jewellery, Warehousing and Logistics as well as a Domestic Tariff Area (DTA) for various industries.
 - Road connectivity with-main Ajmer-Jaipur Express Highway.
 - Bagru & Chitroli Industrial areas are immediate neighbourhood.
 - Operational DTA (Domestic Tariff Area) with large Industries like-JCB, Perto, Premier Pavcon, TTK Healthcare Ltd. Mahindra & Mahindra Ltd. already functioning.



Artistic Impression



Site Address :
 Premier Arise, Plot No. 634, Block-E,
 On Main 160 ft. Road, Mahindra DTA,
 Paldi Parsa, Jaipur (Raj.)



Builder & Developers :



Reg. Off. : 28, Sangram Colony, C-Scheme, Jaipur - 302 001 (Raj.)
 T : +91 141 4009383 | E-mail : info@premierinfra.in | sales@premierinfra.in

for more information **Call : 1800-121-4060**
 Website : www.premierinfra.in

RERA Registration No. : RAJ/P/2017/401

Architects :

Ricky Mathur and Associates
 Architects - Interior Designers - Planners
 33, Dhuleshwar Garden, Jaipur (Raj.) | email : ricky@rickymathur.com

Disclaimer : Promoters reserve the right to change any design, features and specifications of the building without any prior notice and information. This brochure is for illustration purpose only and it cannot be in any way treated as a legal document. All information, specifications, plans, material and visual representations contained in the brochure, model & sample flat are subject to change from time to time by the promoters and / or the competent authorities and shall not form part of the offer or contract.